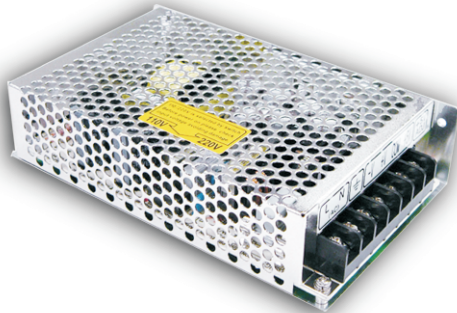




50W Triple Output Switching Power Supply

T-50 series



■ Features :

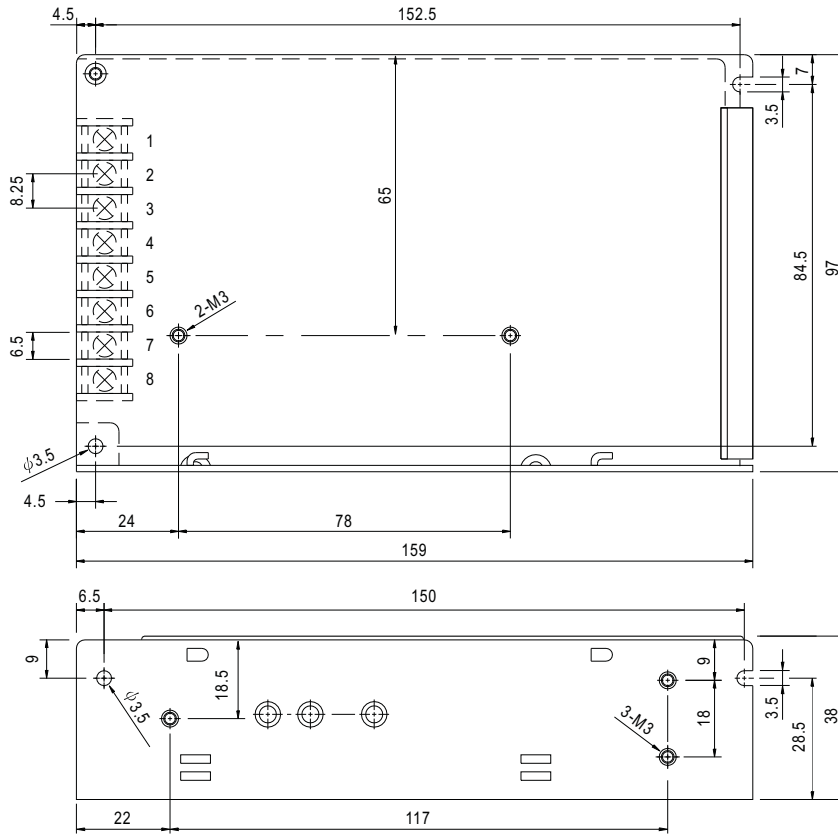
- AC input range selectable by switch
- Protections: Short circuit/Over load
- Cooling by free air convection
- 100% full load burn-in test
- Fixed switching frequency at 24KHz I/P-O/P:Rated
- Low cost
- High reliability
- 1 year warranty

SPECIFICATION

MODEL		T-50A			T-50B			T-50C			T-50D			
OUTPUT	DC VOLTAGE	5V	12V	-5V	5V	12V	-12V	5V	15V	-15V	5V	12V	24V	
	RATED CURRENT	7A	1A	1A	5A	1A	1A	4A	1A	1A	3A	1A	1A	
	CURRENT RANGE	0.6 ~ 7A	0.2 ~ 1A	0.2 ~ 1A	0.6 ~ 5A	0.2 ~ 1A	0.2 ~ 1A	0.6 ~ 4A	0.2 ~ 1A	0.2 ~ 1A	0.6 ~ 4A	0.2 ~ 1.2A	0.2 ~ 1.2A	
	RATED POWER	52W			49W			50W			51W			
	RIPPLE & NOISE (max.) Note.2	100mVp-p	100mVp-p	100mVp-p	100mVp-p	100mVp-p	100mVp-p	100mVp-p	100mVp-p	100mVp-p	100mVp-p	50mVp-p	120mVp-p	120mVp-p
	VOLTAGE ADJ. RANGE	CH1:4.75 ~ 5.5V			CH1:4.75 ~ 5.5V			CH1:4.75 ~ 5.5V			CH1:4.75 ~ 5.5V			
	VOLTAGE TOLERANCE Note.3	±2.0%	±5.0%	±5.0%	±2.0%	±5.0%	±5.0%	±2.0%	±5.0%	±5.0%	±5.0%	±2.0%	±6.0%	±6.0%
	LINE REGULATION	±0.5%	±0.5%	±0.5%	±0.5%	±0.5%	±0.5%	±0.5%	±0.5%	±0.5%	±0.5%	±0.5%	±1.0%	±1.0%
	LOAD REGULATION	±1.0%	±4.0%	±4.0%	±1.0%	±4.0%	±4.0%	±1.0%	±4.0%	±4.0%	±1.0%	±5.0%	±5.0%	
SETUP, RISE, HOLD TIME	200ms, 100ms, 16ms at full load									200ms, 80ms, 16ms at full load				
INPUT	VOLTAGE RANGE	85 ~ 132VAC/170 ~ 264VAC selected by switch						240 ~ 370VDC						
	FREQUENCY RANGE	47 ~ 63Hz												
	EFFICIENCY(Typ.)	66%			69%			71%			72%			
	AC CURRENT	1.6A/115VAC		0.8A/230VAC										
	INRUSH CURRENT(max.)	COLD START 20A/115VAC			40A/230VAC									
	LEAKAGE CURRENT	<0.5mA / 240VAC												
PROTECTION	OVER LOAD	105 ~ 150% rated output power												
		Protection type : Fold back current limiting, recovers automatically after fault condition is removed												
ENVIRONMENT	WORKING TEMP.	20 ~ 90% RH non-condensing												
	WORKING HUMIDITY	-10 ~ +60°C (Refer to output load derating curve), 20 ~ 90% RH												
	STORAGE TEMP., HUMIDITY	-20 ~ +85°C, 10 ~ 95% RH												
	TEMP. COEFFICIENT	±0.03%/°C (0 ~ 50°C) on +5V output												
	VIBRATION	10 ~ 500Hz, 2G 10min./1cycle, period for 60min. each along X, Y, Z axes												
SAFETY & EMC	SAFETY STANDARDS	Design refer to UL1012												
	WITHSTAND VOLTAGE	I/P-O/P:1.5KVAC			I/P-FG:1.5KVAC			O/P-FG:0.5KVAC						
	ISOLATION RESISTANCE	I/P-O/P, I/P-FG, O/P-FG:100M Ohms/500VDC												
OTHERS	MTBF	470.2K hrs min. MIL-HDBK-217F (25°C)												
	DIMENSION	159*97*38mm (L*W*H)												
	PACKING	0.54Kg; 24pcs/14Kg/0.75CUFT												
NOTE	1. All parameters NOT specially mentioned are measured at 230VAC input, rated load and 25°C of ambient temperature. 2. Ripple & noise are measured at 20MHz of bandwidth by using a 12" twisted pair-wire terminated with a 0.1uf & 47uf parallel capacitor. 3. Tolerance : includes set up tolerance, line regulation and load regulation.													

Mechanical Specification

Case No. 901 Unit:mm

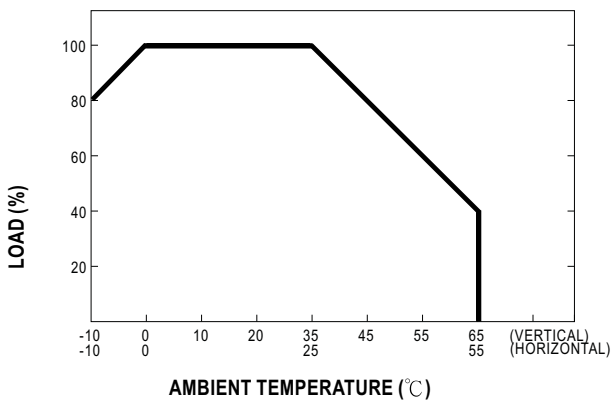


Terminal Pin. No Assignment

Pin No.	Assignment	Pin No.	Assignment	Pin No.	Assignment
1	AC/L	4	DC OUTPUT	8	DC OUTPUT +V1
2	AC/N	5,7	DC OUTPUT COM		
3	FG \perp	6	DC OUTPUT +V2		

MODEL	T-50A	T-50B	T-50C	T-50D
Pin No. 4	-5V	-12V	-15V	+24V

Output Derating



Static Characteristics (B)

