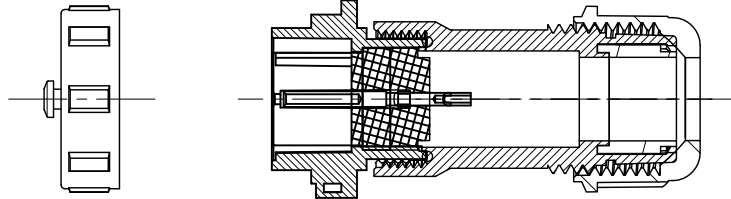
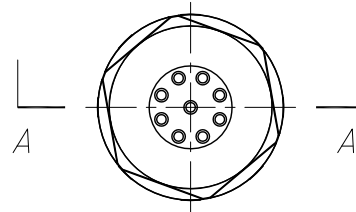
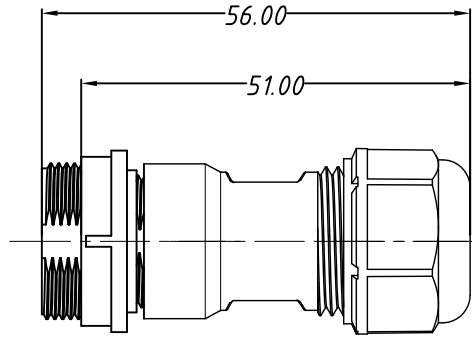
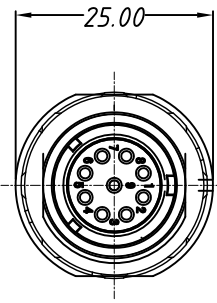


1
RoHS Compliance



SECTION A-A

Material & SPEC.

- 1.Shell Material: PPO,PA66 UL94V-0
- 2.Insulation Materials: PPS, High Temperature 260°C
- 3.Contact: Brass,Gold-plated
- 4.Insulation resistance: 2000MΩ
- 5.Number of poles: 2~9 poles
- 6.Coupling: Threaded
- 7.Termination: Solder
- 8.Cable outer Diameter: 6~10mm
- 9.IP Rating: IP68
- 10.Durability: 500 mating cycles
- 11.Temperature Range: -25°C~+80°C

ORDER INFORMATION:

L - KLS15 - W17 A4 - XX

RoHS

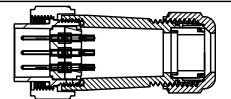
IP68 Connector type

Female plug for Cable

Number of poles: 2~9 poles

Match Connector

KLS15-W17A1



Solder contact arrangement and spec

Number of contact	2	3	4	5	7	9
Male contact face view						
Rated current (A)	10A	10A	5A	5A	5A	5
Contact diameter	φ1.5×2	φ1.5×3	φ1.0×4	φ1.0×5	φ1.0×7	φ1.0×9
Rated voltage(AC.V)	500V	500V	500V	500V	400V	400V
Test voltage(AC.V) 1min	1500V	1500V	1500V	1500V	1200V	1200V
Contact resistance mΩ	2.5	2.5	5	5	5	5
Wire size solder mm ² /AWG	≤2/14	≤2/14	≤0.785/18	≤0.785/18	≤0.785/18	≤0.785/18

GENERAL TOLERANCE	PROJECTION	Description:
.X ±0.05	UNITS mm	IP68 W17 CONN,
.XX ±0.02	SHEET SIZE A4	Female plug for Cable,Solder
	KLS P/N:	KLS15-W17A4-XX

Draw: Daniel 2018-08-27

Check: Daniel 2018-08-27

SCALE 1:1 SHEET



NingBo KLS ELECTRONIC CO.,LTD.