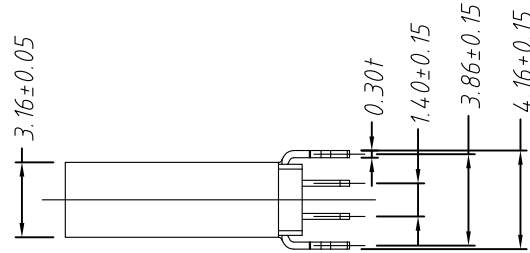
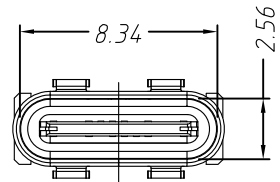


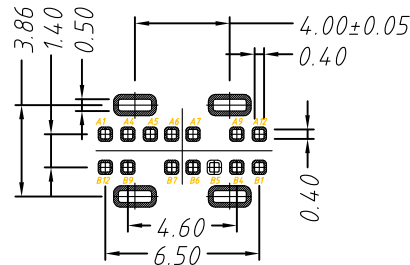
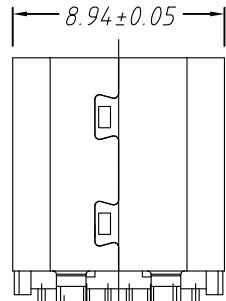
**Electrical**  
 Current Rating: 1.5A Max  
 Voltage: 100 VAC  
 Contact Resistance: 40mΩ Max  
 Insulation Resistance: 100MΩ Min.

**Mechanical**  
 Operating Temperature: -30°C TO +85°C.  
 Insertion Force : 5N~20N  
 Unmating Force: 8N~20N  
 Durability:10000 Cycles



**Order Information**

L-KLS1- 5459  
 USB Type C  
 Female Connector  
 RoHS



A1	GND	B12	GND
A4	VBUS	B9	VBUS
A5	CC1		
A6	DP1	B7	DN2
A7	DN1	B6	DP2
		B5	CC2
A9	VBUS	B4	VBUS
A12	GND	B1	GND
Pin	Signal Name	Pin	Signal Name

**RECOMMENDED PCB LAYOUT**  
**GENERAL TOLERANCE:±0.05**

4	Shell	Stainless Steel,Nickel plated
3	CENTER PIECE	Stainless Steel
2	Contact	Copper Alloy,Au/Nickel plated
1	Housing	High Temperature Plastic,Black
No.:	Name	DESCRIPTION

<b>TOLERANCE</b>		<b>Description:</b>
.X ±0.30	PROJECTION	USB Type C Female CONN.14P DIP,Stright L10.0
.XX ±0.20	UNITS	
.XXX ±0.10	SHEET	KLS P/N: KLS1-5459
X. ±2°	Draw:	Daniel
.X ±1°	Check:	Daniel
.XX ±0.5°	Date	2018-03-01

