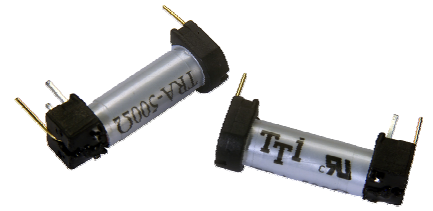




# TRA

## MAIN FEATURES

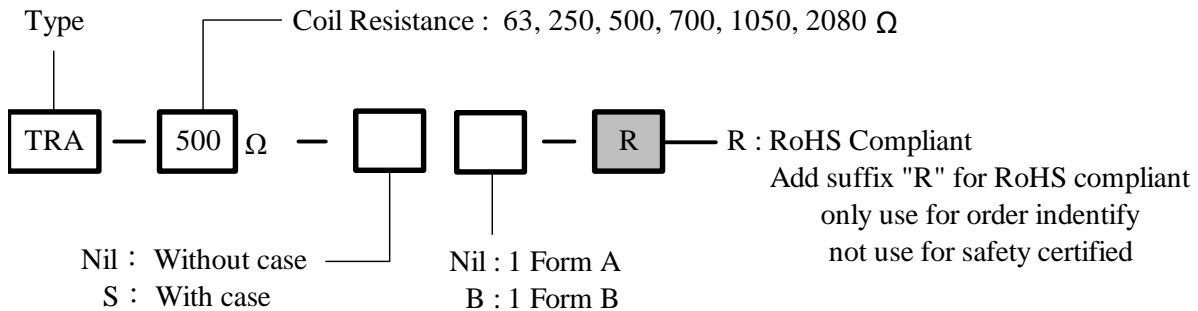
- Small size and light weight offers high density P.C. Board technique.
- Free from dust, gases, humidity, etc. by employment of glass tube sealed reed switch for high reliability contact performance.
- Switching capacity from dry circuit use by 1A selectable to comply with wide applications.
- Fast response time in addition to short bouncing time to application associated with semiconductors like transistors, I.C. 's.
- UL & cUL recognized.



## APPLICATIONS

- Communication equipment, domestic appliance, security equipment, office automation machine, etc.

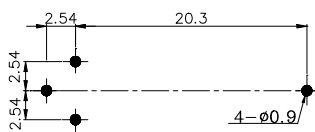
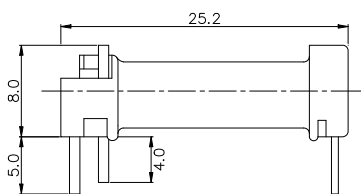
## ORDERING INFORMATION



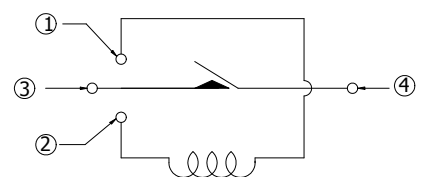
## DIMENSION (unit:mm)

## DRILLING (unit:mm)

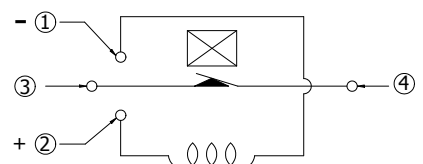
## WIRING DIAGRAM



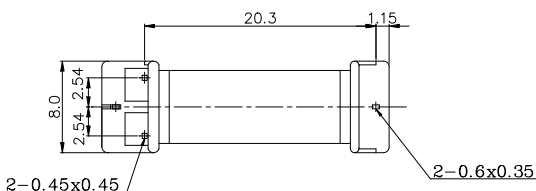
### 1A Contact Type (1 From A)



### 1B Contact Type (1 From B)



1. Coil Terminal(-)
2. Coil Terminal(+)
3. Reed Switch Terminal
4. Reed Switch Terminal



## COIL DATA CHART (AT20°C)

Coil Sensitivity	Coil Voltage Code	Nominal Voltage (VDC)	Nominal Current (mA)	Coil Resistance (Ω) (10%)	Power Consumption (W)	Pull-In Voltage (VDC)	Drop-Out Voltage (VDC)	Max-Allowable Voltage (VDC)
TRA	03	3	47.6	63	abt. 0.05 to 0.28 W	70% Max.	10% Min.	160%
	05	5	10.0	500				
	06	6	24.0	250				
	09	9	12.9	700				
	12	12	11.4	1050				
	24	24	11.5	2080				

## CONTACT RATING

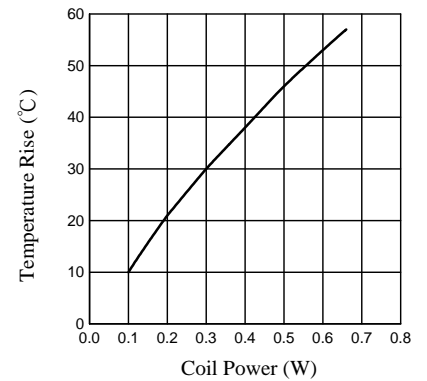
Item	Type	TRA
Contact Capacity Resistive Load (cos(φ)=1)		0.1A 125VAC 0.5A 24VDC
Rated Carrying Current		0.5A
Max. Allowable Voltage		100VDC
Max. Allowable Current		0.5A
Max. Allowable Power Force		10VA 10W
Referenced Min		1 VA 1 mA

## PERFORMANCE (at initial value)

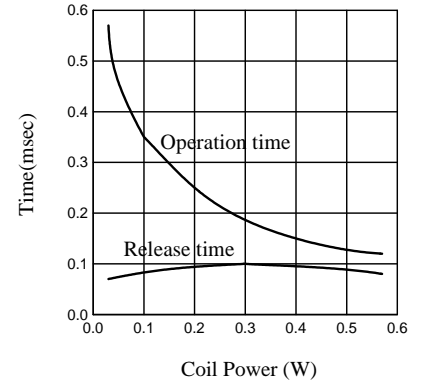
Item	Type	TRA
Contact Resistance		150mΩ Max.
Operation Time		1.0msec Max.
Release Time		0.5msec Max.
Dielectric Strength		Between coil & contact 3000VDC(1 second) Between contacts 200VDC(1 second)
Surge Resistiveness		3000V(between coil & contacts 1 × 40 usec.)
Insulation Resistance		100 MΩ Min. (500VDC)
Max. ON/OFF Switching		Mechanically 300 operation/min Electrically 30 operation/min
Operating Ambient Temperature		-30 to +60°C (No water condensation and no water drop)
Operating Humidity		45 to 85% RH
Coil Temperature Rise		30 deg. Max. (at rated coil voltage)
Vibration		Endurance 10 to 55HZ Double Amplitude 1.5mm Error Operation 10 to 55HZ Double Amplitude 1.5mm
Shock		Endurance 100G Min. Error Operation 13G Min.
Life Expectancy		Mechanically 50,000,000 ops. Min. (no load) 2,000,000 ops. Min. (at rated load) Electrically 10,000,000 ops. Min. (6V 10mA)
Weight		abt. 4.5grs.
UL & cUL		E156521

## REFERENCE DATA

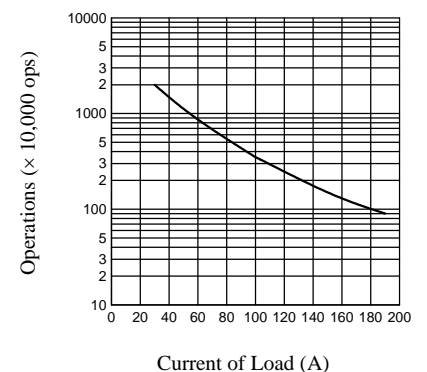
### Coil Temperature Rise



### Operation Time



### Life Expectancy



This datasheet for reference and subject to change without notice. Please double check final specification with Tai-Shing.