

RCA JACK Series

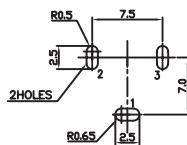
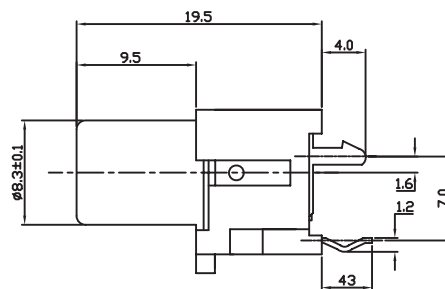
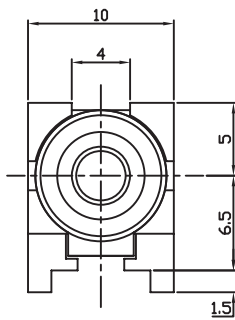
KLS1-RCA-101A RCA Jack PCB Mount Vertical

Electrical Specification:

Contact resistance : 30mΩ Max
Insulation resistance : 50MΩ Min at DC 500V
Withstand voltage : AC 500V(50Hz) 1min
Operating Temperature : -25°C~+85°C

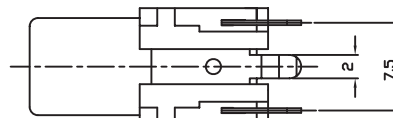
Materials

Housing : PBT UL94V~0
Outer Contact : Brass
Ring Spring : Brass
Tip Spring : Brass



T:1.6 Dimensions of PC board holes
Tolerance : ±0.1(Printed-top view)

UNLESS OTHERWISE SPECIFIED, TOLERANCE ON DECIMAL:±0.3



MODEL NO.	RCA-101A
SCHEMATIC	

ORDER INFORMATION

Product NO.: KLS1-RCA-101A-N-R

Pos. NO. _____ Color: R: Red
RCA Jack Type _____ B: Black
N:Nickel Plated _____ Y: Yellow
W: White