

**RCA JACK Series**

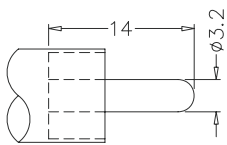
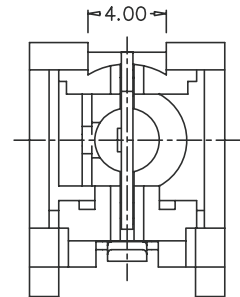
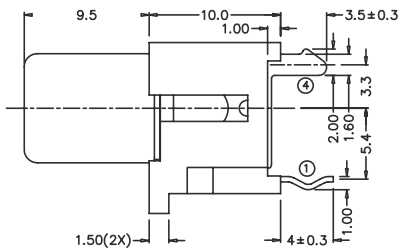
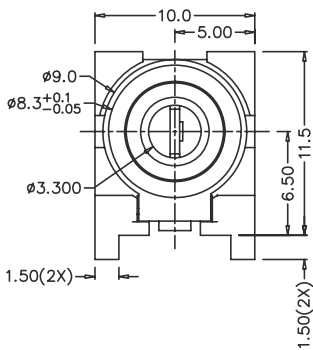
KLS1-RCA-101 RCA Jack PCB Mount Vertical

**Electrical Specification:**

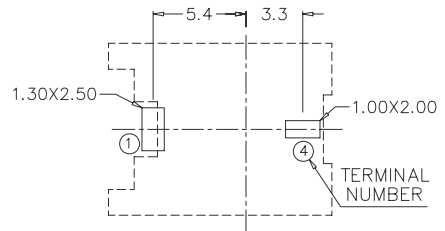
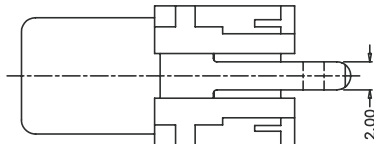
- Contact resistance : 30mΩ Max
- Insulation resistance: 50MΩ Min at DC 500V
- Withstand voltage : AC 500V(50Hz) 1min
- Operating Temperature: -25°C~+85°C

**Materials**

- Housing: PBT UL94V-0
- Terminal 1: C. R. Steel
- Terminal 4: Brass



RCA MATE PLUG



PCB LAYOUT (BOTTOM VIEW)

MODEL NO.	RCA-101
SCHEMATIC	

**ORDER INFORMATION**

**Product NO.: KLS1-RCA-101-N-R**

