



■ Features :

- Wide 4:1 DC input range
- Protections: Short circuit / Overload / Over voltage
- 1000VDC I/O isolation
- Built-in EMI filter
- Cooling by free air convection
- Built-in remote ON-OFF control
- 100% full load burn-in test
- Lost cost
- High reliability
- 2 years warranty

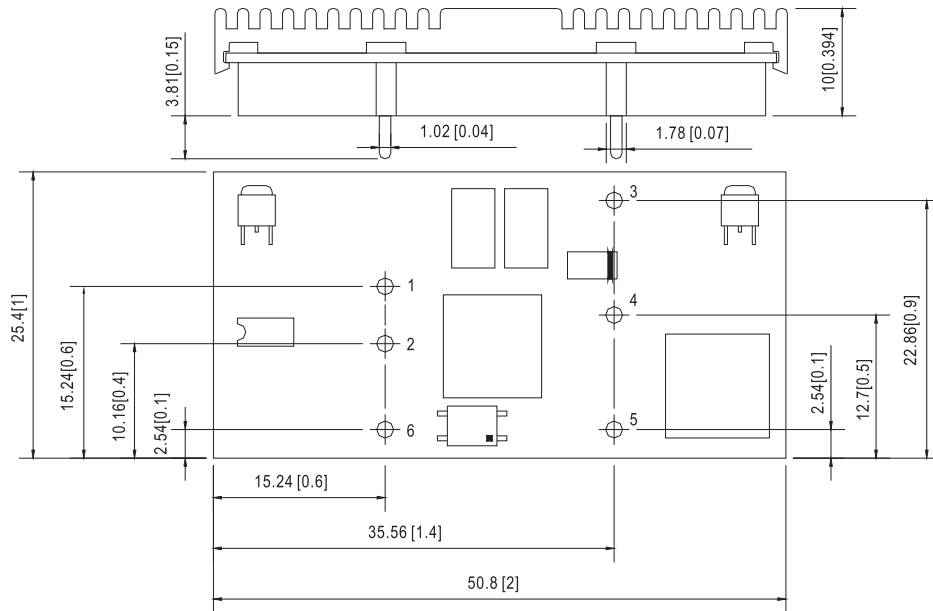


SPECIFICATION

MODEL		NSD10-12D5		NSD10-12D12		NSD10-12D15		NSD10-48D5		NSD10-48D12		NSD10-48D15				
OUTPUT	DC VOLTAGE	5V	-5V	12V	-12V	15V	-15V	5V	-5V	12V	-12V	15V	-15V			
	RATED CURRENT	1A	1A	0.42A	0.42A	0.33A	0.33A	1A	1A	0.42A	0.42A	0.33A	0.33A			
	CURRENT RANGE	0.05 ~ 1A	0.05 ~ 1A	0.02 ~ 0.42A	0.02 ~ 0.42A	0.016 ~ 0.33A	0.016 ~ 0.33A	0.05 ~ 1A	0.05 ~ 1A	0.02 ~ 0.42A	0.02 ~ 0.42A	0.016 ~ 0.33A	0.016 ~ 0.33A			
	RATED POWER	10W														
	CAPACITIVE LOAD (max.)	±1000uF														
	RIPPLE & NOISE (max.) Note.2	75mVp-p(10% ~ 100% load)														
	VOLTAGE TOLERANCE Note.3	+/-4.0%		+/-2.0%		+/-2.0%		+/-3.0%		+/-2.0%		+/-2.0%				
	LINE REGULATION	+/-1.0%														
INPUT	LOAD REGULATION	+/-3.0%		+/-2.0%		+/-1.0%		+/-2.0%		+/-2.0%		+/-1.0%				
	RATED DC INPUT	12VDC						48VDC								
	VOLTAGE RANGE	9.8 ~ 36VDC						22 ~ 72VDC								
	EFFICIENCY (Typ.)	76%			77%			77%			78%			77%		
	DC CURRENT	1.4A/12VDC						0.4A/48VDC								
PROTECTION	SHUTDOWN IDLE CURRENT	20mA/12VDC														
	OVERLOAD	Above 105% rated output power Protection type : Over power limiting, recovers automatically after fault condition is removed														
	OVER VOLTAGE(CLAMP)	5.75 ~ 7.5V	-5.75 ~ -7.5V	13.8 ~ 18V	-13.8 ~ -18V	17.3 ~ 22.5V	-17.3 ~ -22.5V	5.75 ~ 7.5V	-5.75 ~ -7.5V	13.8 ~ 18V	-13.8 ~ -18V	17.3 ~ 22.5V	-17.3 ~ -22.5V			
FUNCTION	SHORT CIRCUIT Note.4	Recovers automatically after fault condition is removed														
	ON/OFF CONTROL	Logic "1" OPEN: ON logic "0" GND: OFF														
ENVIRONMENT	WORKING TEMP.	-25 ~ +70℃														
	WORKING HUMIDITY	0% ~ 95% RH max.														
	STORAGE TEMP., HUMIDITY	-40 ~ +85℃, 0 ~ 95% RH														
	TEMP. COEFFICIENT	+/-0.03%/℃ (0~60℃)														
SAFETY & EMC (Note 5)	SAFETY STANDARDS	UL60950-1 approved, Design refer to TUV EN60950-1														
	ISOLATION VOLTAGE	I/P-O/P:1KVDC														
	ISOLATION RESISTANCE	I/P-O/P:100M Ohms/500VDC 25℃ 70%RH														
	EMI CONDUCTION & RADIATION	Compliance to EN55022 (CISPR22) Class B														
OTHERS	EMS IMMUNITY	Compliance to EN61000-4-2,3,4,6,8; EN55024, light industry level, criteria A														
	MTBF	1878.5K hrs min. MIL-HDBK-217F (25℃)														
	DIMENSION	50.8*25.4*10mm (2**1**0.394") (L*W*H)														
NOTE	PACKING	0.02Kg; 300pcs/7Kg/0.97CUFT														
	1. All parameters NOT specially mentioned are measured at 12, 48VDC input, rated load and 25℃ of ambient temperature. 2. Ripple & noise are measured at 20MHz of bandwidth by using a 12" twisted pair-wire terminated with a 0.1uF & 47uF parallel capacitor. 3. Tolerance : includes set up tolerance, line regulation and load regulation. 4. Short circuit not more than 60 seconds. 5. The power supply is considered a component which will be installed into a final equipment. The final equipment must be re-confirmed that it still meets EMC directives. 6. For the input line, a 47uF/100V electrolytic capacitor with ESR<1Ω is used in the test. 7. EMC filter suggestion:															

Mechanical Specification

Unit:mm[inch]

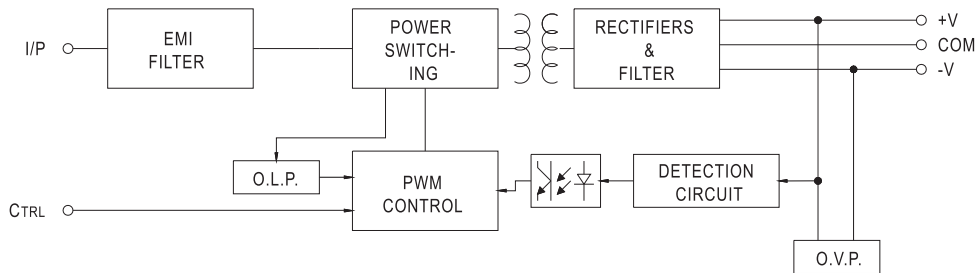


Pin. No Assignment

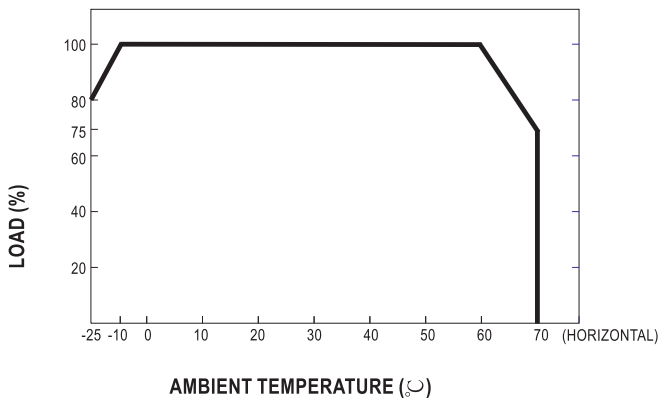
Pin No.	Assignment	Pin No.	Assignment
1	+INPUT	4	COMMON
2	-INPUT(GND)	5	-OUT
3	+OUT	6	CONTROL

Block Diagram

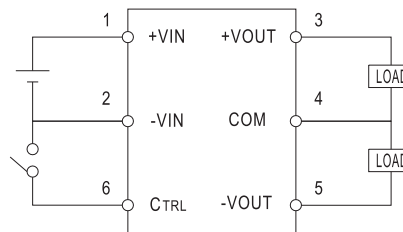
fosc : 350KHz



Derating Curve



ON/OFF Control



CONTROL INPUT.....PIN6
 CONTROL COMMON.....PIN2
 LOGIC COMPATIBILITY.....CMOS OR OPEN COLLECTOR TTL
 CONTROL VOLTAGE
 ON.....+5.5VDC min. OR OPEN CIRCUIT
 OFF.....+2.5VDC max. OR SHORT TO PIN2