



MB05S THRU MB10S

Voltage Range - 50 to 1000 V olts Current - 0.8 Ampere

SINGLE PHASE GLASS PASSIVATED BRIDGE RECTIFIERS

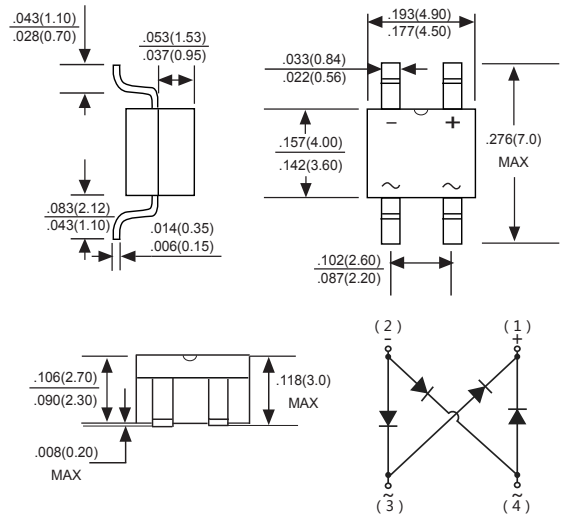
Features

- ◆ Ideal for printed circuit board
- ◆ Reliable low cost construction utilizing molded plastic technique
- ◆ High temperature soldering guaranteed: 260°/10 seconds at 5 lbs., (2.3kg) tension
- ◆ Small size, simple installation
- ◆ High surge current capability



Mechanical Data

Case : JEDEC MBS Molded plastic body
Terminals : Solder plated, solderable per MIL-STD-750, Method 2026
Polarity : Polarity symbol marking on body
Mounting Position : Any
Weight : 0.008 ounce, 0.22 grams



Dimensions in inches and (millimeters)

Maximum Ratings And Electrical Characteristics

Ratings at 25°C ambient temperature unless otherwise specified.

Single phase half-wave 60Hz, resistive or inductive load, for capacitive load current derate by 20%.

Parameter	SYMBOLS	MDD MB05S	MDD MB1S	MDD MB2S	MDD MB4S	MDD MB6S	MDD MB8S	MDD MB10S	UNITS
Marking Code									
Maximum repetitive peak reverse voltage	V_{RRM}	50	100	200	400	600	800	1000	V
Maximum RMS voltage	V_{RMS}	35	70	140	280	420	560	700	V
Maximum DC blocking voltage	V_{DC}	50	100	200	400	600	800	1000	V
Maximum average forward rectified current at $T_c=30^\circ C$ On glass-epoxy P.C.B. On aluminum substrate	$I_{F(AV)}$				0.5				A
Peak forward surge current, 8.3ms single half sine-wave superimposed on rated load (JEDEC Method)	I_{FSM}				30				A
Maximum instantaneous forward voltage drop per leg at $I_F=0.4A$	V_F				1.0				V
Maximum DC reverse current at rated DC blocking voltage $T_A=25^\circ C$ $T_A=125^\circ C$	I_R				5 0.5				μA mA
Typical junction capacitance (Note 3)	C_J				13				pF
Typical thermal resistance	$R_{\theta JC}$				70				$^\circ C/W$
Operating temperature range	T_J				-55 to +150				$^\circ C$
storage temperature range	T_{STG}				-55 to +150				$^\circ C$

NOTES: 1. On glass epoxy P.C.B. mounted on 0.05x0.05"(1.3x1.3mm) pads
 2. On aluminum substrate P.C.B. with on area of 0.8"x0.8"(20x20mm) mounted on 0.05x0.05"(1.3x1.3mm) solder pad
 3. Measured at 1.0MHz and applied reverse voltage of 4.0 volts.



Ratings And Characteristic Curves

Fig.1 Average Rectified Output Current Derating Curve

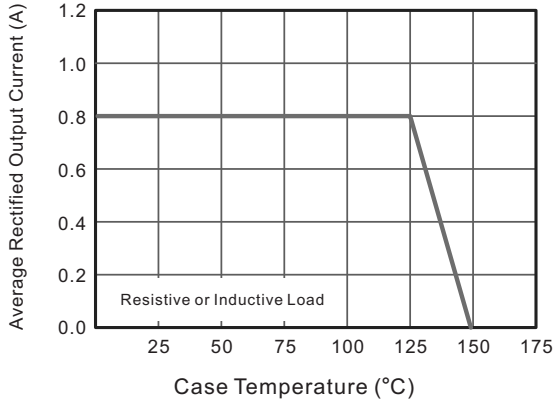


Fig.2 Typical Reverse Characteristics

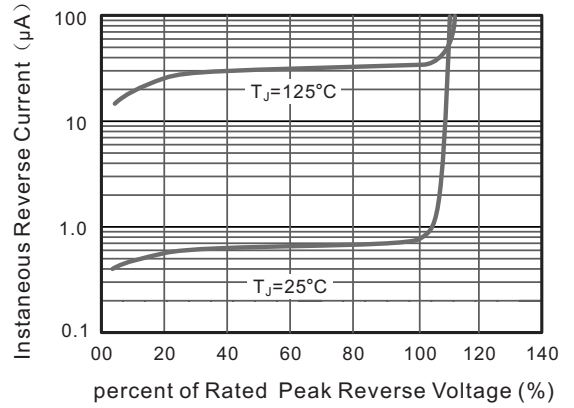


Fig.3 Typical Instantaneous Forward Characteristics

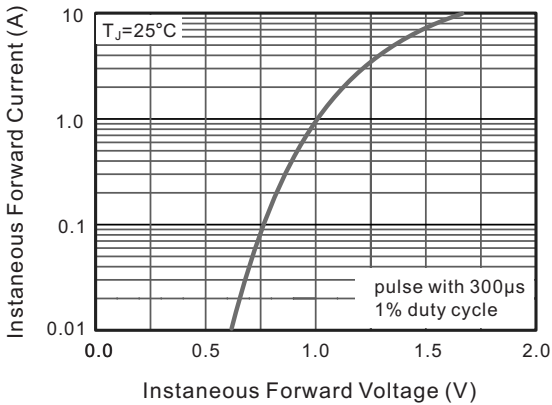


Fig.4 Typical Junction Capacitance

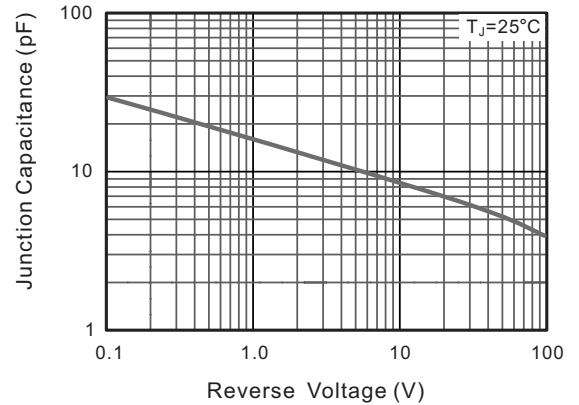
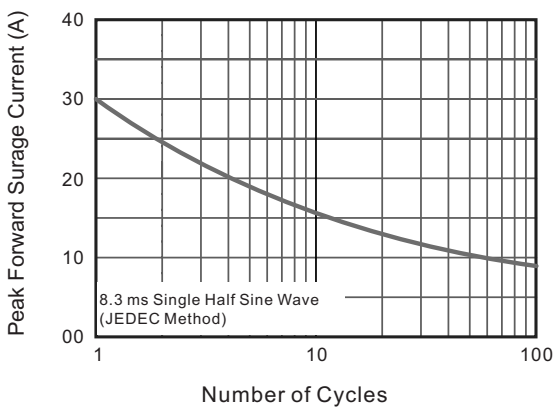
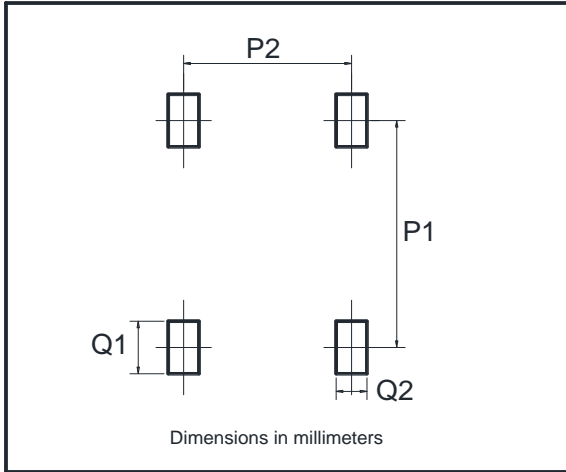


Fig.5 Maximum Non-Repetitive Peak Forward Surge Current



The curve above is for reference only.

Suggested Pad Layout



Dim	Min
P1	6.00
P2	2.40
Q1	1.84
Q2	1.20

Important Notice and Disclaimer

Microdiode Electronics (Jiangsu) reserves the right to make changes to this document and its products and specifications at any time without notice. Customers should obtain and confirm the latest product information and specifications before final design, purchase or use.

Microdiode Electronics (Jiangsu) makes no warranty, representation or guarantee regarding the suitability of its products for any particular purpose, nor does Microdiode Electronics (Jiangsu) assume any liability for application assistance or customer product design. Microdiode Electronics (Jiangsu) does not warrant or accept any liability with products which are purchased or used for any unintended or unauthorized application.

No license is granted by implication or otherwise under any intellectual property rights of Microdiode Electronics (Jiangsu).

Microdiode Electronics (Jiangsu) products are not authorized for use as critical components in life support devices or systems without express written approval of Microdiode Electronics (Jiangsu).