



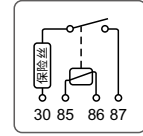
LANBOO
中国·蓝波

让用电更安全
Make Electricity Safer

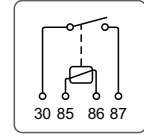


LB-JD系列规格书
大功率汽车继电器
High Power Automotive Relay

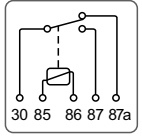
V2023.3



4脚/一常开/保险丝
4Pins/1NO/With fuse



4脚/一常开
4Pins/1NO



5脚/一开一闭
5Pins/1NO1NC

30	Common
85 86	Coil
87	NO
87a	NC

- | | | | | | |
|--|--|--|---|---|---|
|
30/40/80A
大功率
High Power |
$\leq 50m\Omega$
大银触点
Silver contact |
1000000
次机械寿命
Mechanical Life |
VO
耐高温阻燃
Flaming Retarding |
$\leq 25ms$
高灵敏度
Hypersensitive |
$\geq 100M\Omega$
绝缘耐压
Insulation |
|
-40~80°C
耐高温性能强
Operating Temp. |
CE RoHS
多项认证
Certification |
24H
快速发货
Quickly Delivery |
源头厂家
厂家直销
Manufacturer |
品质保障
加长质保
Quality Assurance |
实时在线
优质服务
First-Rate Service |

型号说明/选型 举例: LB-JD1912/4脚/12V/30A/光背款

LB-JD ●/■/★/◇/◆

备注: 铁背款、塑料背款、光背款、保险丝款、针脚款

触点负载电流: 30A、40A、80A

线圈电压: 12V 24V

脚位数量: 4脚、5脚

继电器编码:

JD1912: 首位1代表12V; 末尾2代表4脚

JD2914: 首位2代表24V; 末尾4代表5脚

LB: LANBOO蓝波

性能参数

接线形式	配套插座、焊接	
外壳	PA6(RoHS),VO级阻燃	
底座	PBT(RoHS),VO级阻燃	
触点	铜覆银氧化锡AgSnO2/Cu (RoHS)	
引脚	H65镀锡 (RoHS)	
引脚反向推力	≥80N无位移, 1min	
工作环境温度	-40°C~+80°C, 非真空状态、不结冰情况下	
工作环境湿度	35~85%RH	
贮存环境温度	包装完好情况下, -40°C~+55°C	
贮存环境湿度	包装完好情况下, 45~90%RH	
接触电阻	≤50mΩ	
触点类型	1NO	
触点负载	30A款: 30A/13.5VDC; 20A/27VDC 40A款: 40A/13.5VDC; 20A/27VDC 80A款: 70A/13.5VDC; 40A/27VDC	
吸合电压(23°C)	DC: ≤75%(额定电压);	
释放电压(23°C)	DC: ≥10%(额定电压);	
线圈参数	最大电压	23°C时额定电压的150%; 85°C时额定电压的130%;
	吸合时间	≤25ms
	释放时间	≤25ms
	线圈耗电量	DC12V约1.8W
	线圈电压	DC12V
	线圈电阻	DC12V: 80±10%Ω
	最大连续电流	NO常开触点:60A(23°C), 40A(85°C), 17A(125°C)
最大切换电流	ON 接通(NO):150A; OFF 断开(NO):30A(阻性, 13.5VDC)	
绝缘电阻	≥100MΩ(500VDC)(端子与外壳之间)	
抗电强度(介质耐压)	触点与线圈间: 500VAC 1min; 断开触点间:500VAC 1min	
触点最小适用负载	6VDC, 1A (参考值, 取决于环境与负载情况)	
耐振性	10Hz~500Hz,49m/s ² (5G)	
包装跌落	600mm高度连续跌落4次, 产品无损坏	
盐雾试验	24h, 1个周期, (参考GB/T 2423.18-2012)	
低温试验	-40°C, 96h, 接触电阻≤200mΩ	
高温试验	80°C, 96h, 接触电阻≤200mΩ	
高低温冲击试验	-40~+85°C, 85%RH, 40min/循环, 50个循环, 接触电阻≤200mΩ	
电气寿命	≥10万次	
机械寿命	≥100万次 (切换频率: 300cpm)	
产品认证	CE RoHS	
质保	66个月	
图纸未注一般公差	按GB/T 1804-m 标准执行。	

Model Code Example: LB-JD1912/4PINS/12V/30A/No Hook

LB-JD ● / ■ / ★ / ◇ / ◆

Remark: Metal hook, Plastic hook, No hook, Fuse, PCB PINS

Contact Load Current: 30A、40A、80A

Coil: 12V 24V

PIN: 4Pins、5Pins

Relay Code:

JD1912: (1:12V ; 2:4Pins) JD2914: (2:24V ; 4:5Pins)

LB: LANBOO

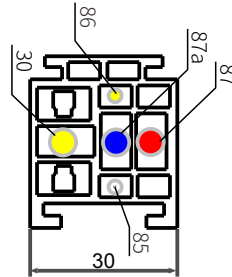
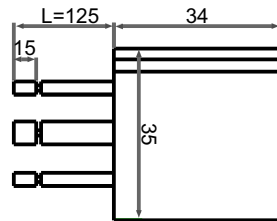
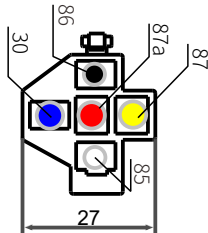
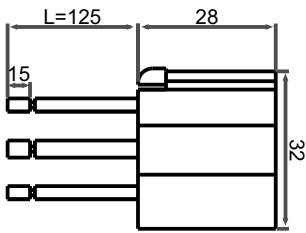
Performance Parameter

Wiring Form	Supporting socket, Welding	
Shell	PA6(RoHS),VO In flaming retarding	
Base	PBT(RoHS),VO In flaming retarding	
Contact	Silver tin oxide,AgSnO2/Cu (RoHS)	
Pins	H65 Tin plated (RoHS)	
Pin Reverse Thrust	≥80N No shifting, 1min	
Working Temp.	-40°C~+80°C, Under non-vacuum and non-freezing conditions	
Working Humidity	35~85%RH	
Storage Temp.	In good condition of packing, -40°C~+55°C	
Storage Humidity	In good condition of packing, 45~90%RH	
Contact Resistance	≤50mΩ	
Type of Contact	1NO	
Contact Load	30A : 30A/13.5VDC; 20A/27VDC 40A : 40A/13.5VDC; 20A/27VDC 80A : 70A/13.5VDC; 40A/27VDC	
Pull-in Voltage(23°C)	DC: ≤75%(Rated Voltage);	
Release Voltage(23°C)	DC: ≥10%(Rated Voltage);	
Coil	MAX Voltage	150% of rated voltage at 23 °C; 130% of rated voltage at 85 °C;
	Pull-in Time	≤25ms
	Release Time	≤25ms
	Coil Power	DC12V , About 1.8W
	Coil Voltage	DC12V
	Coil Resistance	DC12V: 80±10%Ω
	MAX Continuous Current	NO Contact:60A(23°C), 40A(85°C), 17A(125°C)
MAX Switching Current	Turn on(NO):150A ; Turn off(NO):30A(Resistive, 13.5VDC)	
Insulation Resistance	≥100MΩ(500VDC)(Between the terminal and the housing)	
Dielectric Strength	Between the contact and the coil: 500VAC 1min ; Between Contacts:500VAC 1min	
MIN Applicable Load contact	6VDC, 1A (Reference values, depending on environment and load conditions)	
Resistance to Vibration	10Hz~500Hz,49m/s ² (5G)	
Packaging Drop	600mm height fell 4 times continuously, no damage to the product	
Salt Spray Test	24h, 1 Cycle, (GB/T 2423.18-2012)	
Low Temp Test	-40°C, 96h, Contact Resistance≤200mΩ	
High Temp Test	80°C, 96h, Contact Resistance≤200mΩ	
High-Low Temp Impact Tester	-40~+85°C, 85%RH, 40min/Circulation, 50Circulation, Contact Resistance≤200mΩ	
Electrical Life	≥100,000 Times	
Mechanical Life	≥1 Million Times (Switching Frequency: 300cpm)	
Product Certification	CE RoHS	
Quality Quarantee	66 Months	
Undeclared Tolerance	Reference GB/T 1804-m	



专用接插件 Special Connector

V0阻燃耐温材料, 国标镀锡铜芯线
V0 Flame Retardant/Tin plated pure copper core wire



LB-J5脚/40A/125(15)

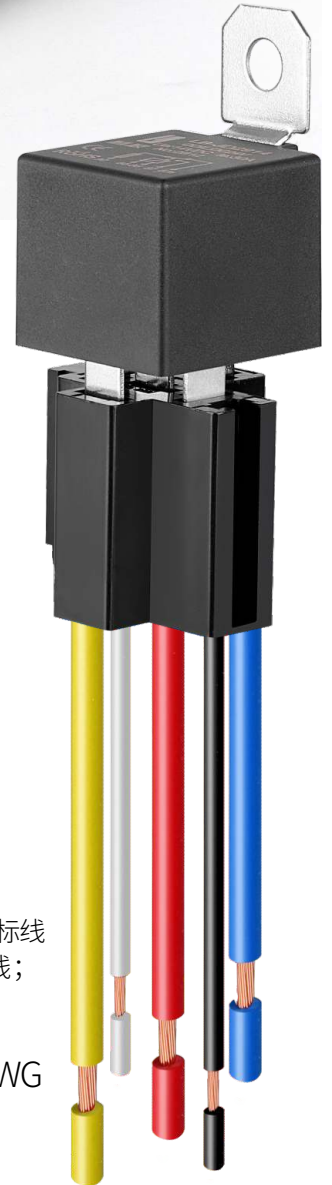
导线:黄色(87)、红色(87a)、蓝色(30)线为2mm²国标线
白色线(85)、黑色线(86)为1.3平方国标线;
长度L:默认125mm;可定制线长;

Yellow(87)、Red(87a)、Blue(30) wires:14AWG
White(85) and Yellow(86) wires:16AWG
Wire length is 125mm,
other lengths can be customized

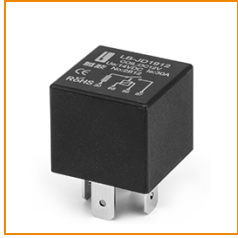
LB-J5脚/80A/125(15)

导线:黄色(87)、红色(87a)、蓝色(30)线为4mm²国标线
白色线(85)、黑色线(86)为0.75平方国标线;
长度L:默认125mm;可定制线长;

Yellow(87)、Red(87a)、Blue(30) wires:11AWG
White(85) and Yellow(86) wires:18AWG
Wire length is 125mm,
other lengths can be customized



Dimensions



常规款
Common style



金属背款
Metal Hook



塑料背款
Plastic Hook

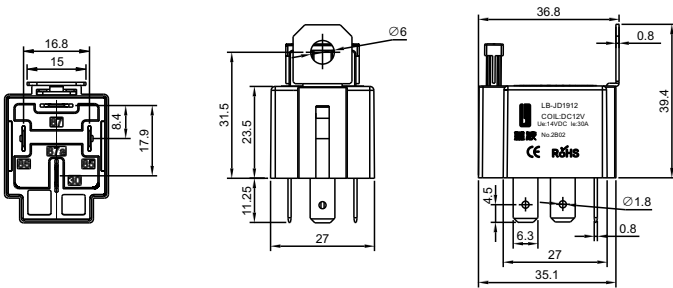


保险丝款
Hook&fuse

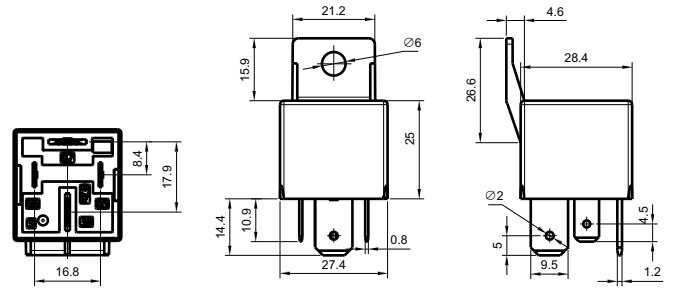


PCB焊接脚款
PCB Pins

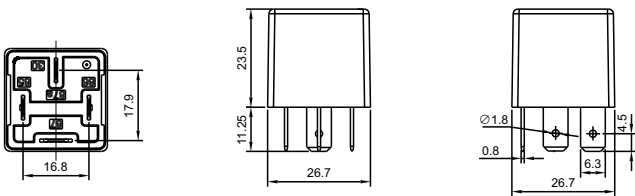
30A保险丝款/Hook&fuse



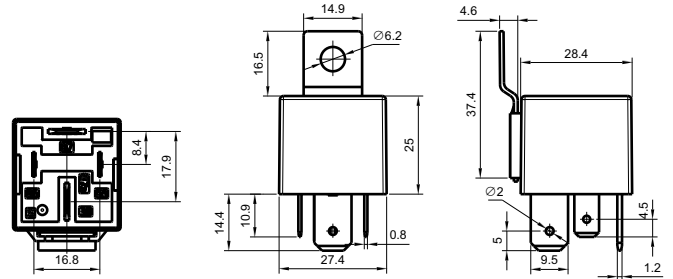
40/80A塑料背款/Plastic Hook



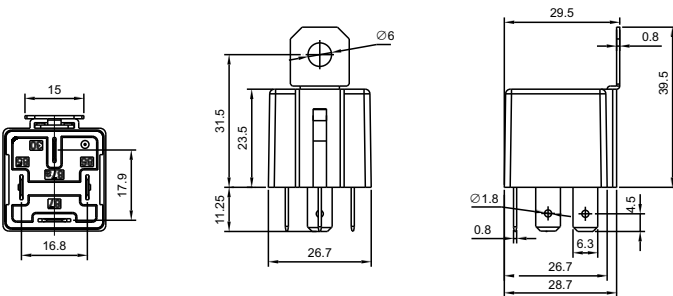
30A光背款/Common style



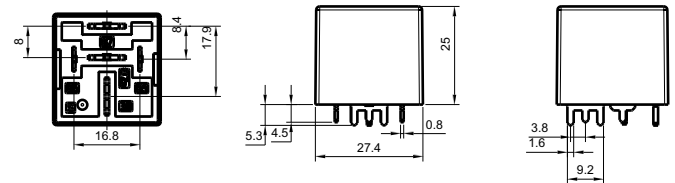
40/80A铁背款/Metal Hook



30A铁背款/Metal Hook



80A PCB焊接脚款/PCB Pins



40/80A光背款/Common style

