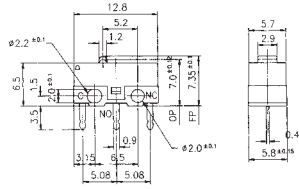


МИКРОПЕРЕКЛЮЧАТЕЛИ

DM3-00P-110

125 В, 3 А
ON-ON,
(SPDT)*



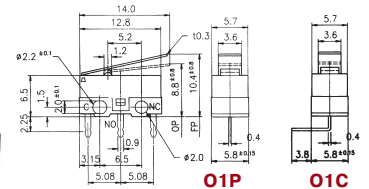
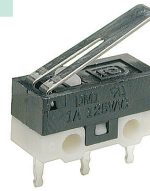
DM1-01P-30

125 В, 1А

DM1-01C-30

12 В, 1А

угловой
ON-ON,
(SPDT)*

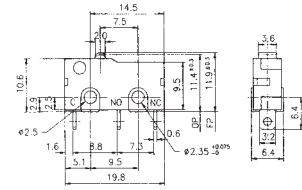


O1P

O1C

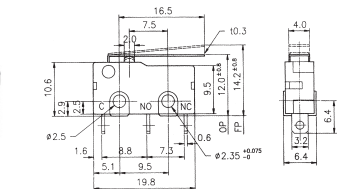
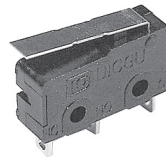
SM5-00N-115

250 В, 3 А
ON-ON,
(SPDT)*



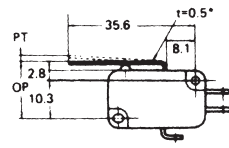
SM5-02N-25G

250 В, 3 А
ON-ON,
(SPDT)*



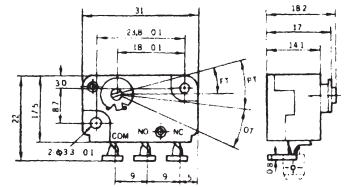
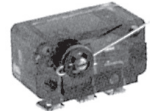
B180E

250 В, 5 А
ON-ON,
(SPDT)*



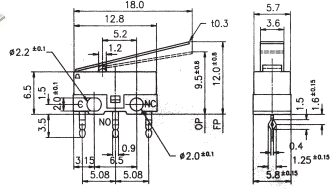
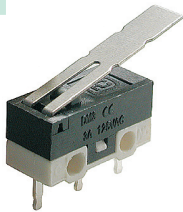
B181A

250 В, 5 А
ON-ON,
(SPDT)*



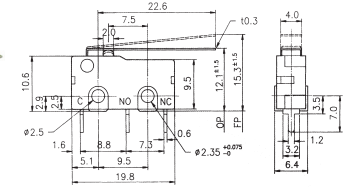
DM3-03P

125 В, 3 А
ON-ON,
(SPDT)*



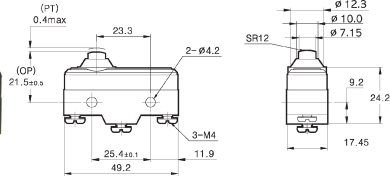
SM5-03P

125 В, 5 А
ON-ON,
(SPDT)*



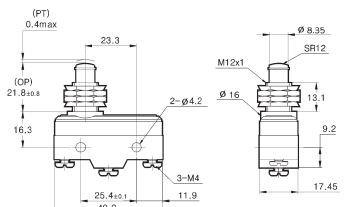
Z-15GD

(SPDT)*



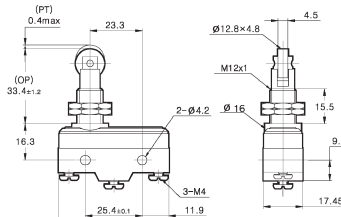
Z-15GQ

(SPDT)*



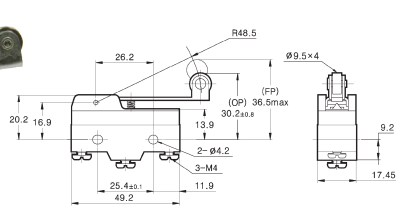
Z-15GQ22

(SPDT)*



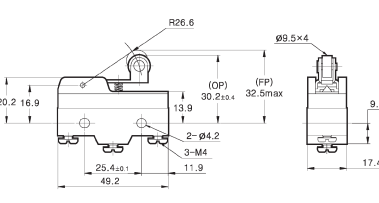
Z-15GW2

(SPDT)*



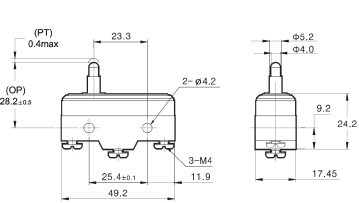
Z-15GW22

(SPDT)*



Z-15G

(SPDT)*



* SP DT
1 2

1. SP – одна контактная группа
DP – две контактные группы
2. ST – размыкающая или замыкающая контактная группа
DT – переключающая контактная группа