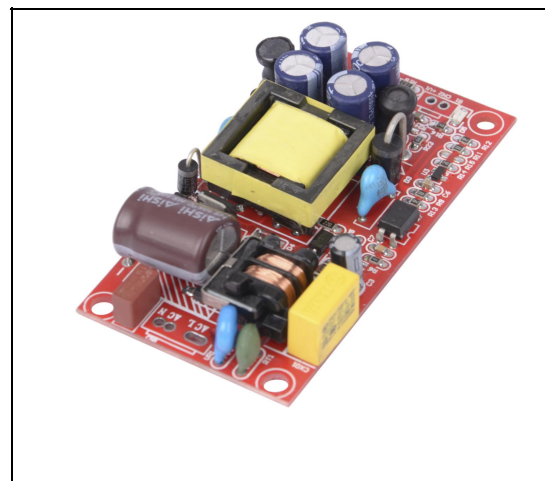


Product features:

- 1.The product is with easy installation. Input / Output could insert terminals and Retainable hole welding wire is used.
- 2.Fixed mounting holes are arranged at the four corners to prevent from power failure due to movement/vibration. The straight length of the fixed holes is 3.2mm.
- 3.International Universal input voltage: 85-264V AC or 110-370V DC.
- 4.High efficiency, high power density, low output ripple noise, dual channel output,High accuracy of output voltage of control circuit (+5V/7V)
- 5.High isolation between input and output
- 6.Overcurrent protection, short circuit protection and temperature protection.
- 7.The output has built-in double LC-pi filter without external circuit.
- 8.Three years of quality assurance



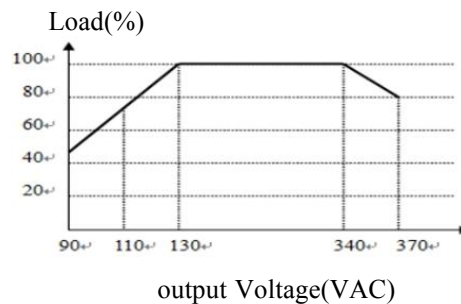
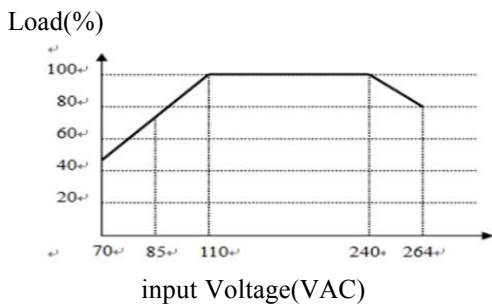
| Item | Condition | Common models of this series we have (we can customize any products with different output voltage and current or other requirements according to customer's requirements) | | | | | |
|--------------------------------|--------------------------------------|---|----|----------------|------|----------------|----|
| | | SM-DLK17A-0512 | | SM-DLK17A-0524 | | SM-DLK17A-0712 | |
| 1、 Input Features | | | | | | | |
| AC Input(VAC) | | 85-264VAC | | | | | |
| DC Input(VDC) | | 110-370VDC | | | | | |
| Frequency Range(Hz) | | 47-63Hz | | | | | |
| Input Current(A) | | 1/115VAC 0.5/230VAC | | | | | |
| Surge current(A) | | Cold Boot: 20A/230VAC | | | | | |
| Efficiency(TYP.) | | 76% | | 78% | | 81% | |
| Stand-by power consumption(mW) | | ≤300mW/230VAC | | | | | |
| 2、 Output Features | | | | | | | |
| Output Voltage(VDC) | | 5V+12V | | 5V+24V | | 7V+12V | |
| Output voltage accuracy | | Main Circuit: ±1%, Subcircuit: ±10% | | | | | |
| Rated current(ADC) | | 1A | 1A | 1A | 0.5A | 0.7A | 1A |
| Rated power(W) | | 17W | | 17W | | 17W | |
| Ripple&Noise(mv P-p) | Rated input voltage, 20MHz bandwidth | VO1 Main Circuit: 5V/7V-100mV | | | | | |
| | | VO2 Subcircuit: 12V/24V-200mV | | | | | |
| Linear adjustment rate | Full-load | ±1% | | | | | |
| Load regulation | 10-100% Load | ±3% | | | | | |
| Start up and rise time | Full-load | 2000ms, 30ms/115VAC 1000ms, 30ms/230VAC | | | | | |
| Retention time(ms) | Full-load | 16ms/115VAC 50ms/230VAC | | | | | |
| Overload protection | Rated input voltage | 115%-150% of the rated output power | | | | | |
| | | Protection mode: hiccup mode, auto-response after removal of abnormal | | | | | |
| Short-circuit protection | Rated input voltage | Automatic recovery after long-term short circuit | | | | | |
| Over-current protection | | ≥1.1 times I _o | | | | | |

| | | |
|-------------------------------|-------------|-------|
| Start delay time(ms) | Vin: 230VAC | 500ms |
| Power-off protection time(ms) | | 20ms |

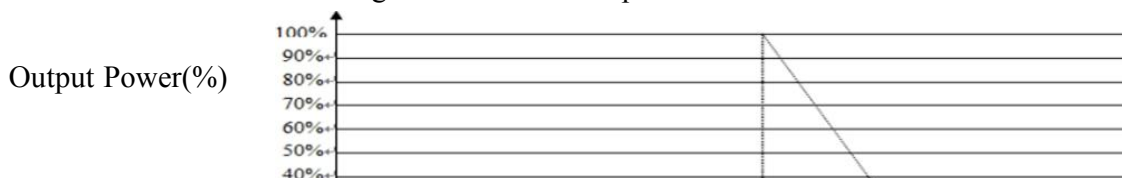
3、General Features

| | | |
|----------------------------------|---|---|
| Working temperature(°C) | / | -30-70°C |
| Working humidity(RH) | / | 20-90%RH, non-condensing |
| temperature coefficient | / | ±0.02%/°C |
| Storage temperature and humidity | | -40~+85°C 10-95%RH |
| Switching frequency(KHz) | | 20-65KHz |
| Isolation voltage(VAC) | Input-to-output, test lasted 60s, ≤ 5mA | 3000VAC |
| Insulation resistance(MΩ) | Input-to-output, 500VDC | 100MΩ |
| Leakage current(mA) | 500VDC | Input to output ≤1mA/RMS |
| MTBF | @25°C | 215000h |
| Safety level | / | Adaptation: CLASS B |
| Vibration resistance | / | 10—500Hz 2G 10 minutes/cycle. 60 minutes each for X, Y and Z. |
| Electro-magnetic compatibility | / | Adaptation: EN55022(CISPR22) Class B EN61000-3-2-3 |
| Remarks | | <p>1. Except for special instructions, the parameters of this specification are measured at 230VAC input, rated load and 25°C.</p> <p>2. Measurement of ripple and noise: Using a 12" twisted pair, and the terminal has two capacitors, 0.1uF and 10uF in parallel. Measured at 20MHz bandwidth.</p> <p>3. Accuracy: Including errors, linear adjustment rate and load adjustment rate.</p> <p>4. The power supply should be regarded as part of the components in the system, and electro-magnetic compatibility related confirmation should be carried out with the terminal equipment.</p> <p>5. Reduced output is required under low input voltage. Please refer to the reduction graph.</p> |

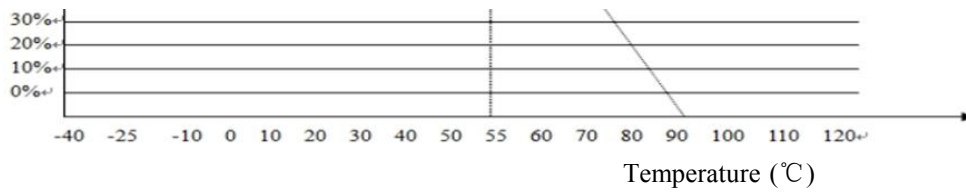
>Curves Chart For Product Features



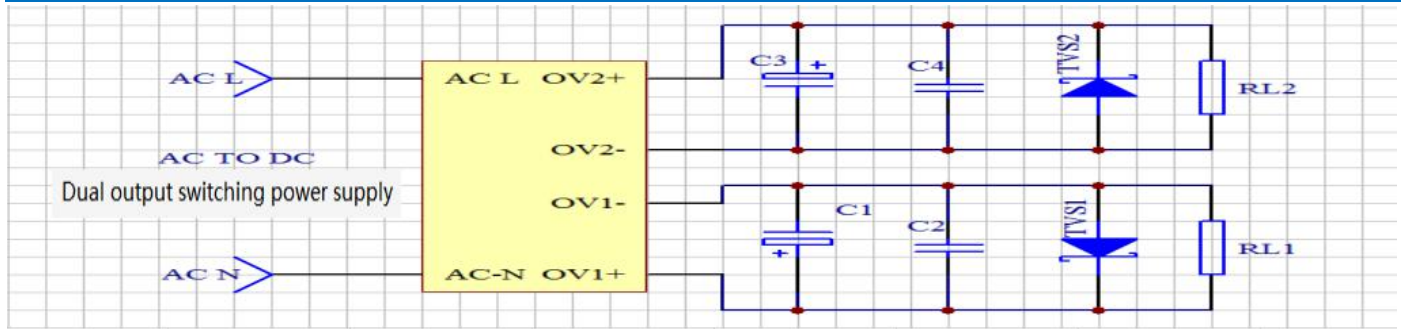
Working Environment Temperature and Load Features



Our company reserves the copyright and product ultimate interpretation. The right to change specifications without prior notice. If the picture is inconsistent with the real object, the real object shall prevail.



>1. Typical application circuit



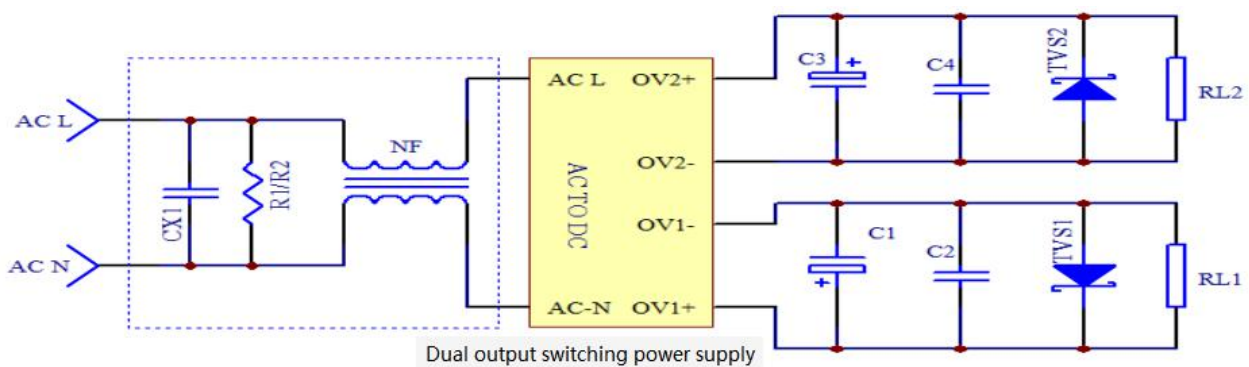
>Output Parts:

| Output Voltage | C1/C3 | C2/C4 | TVS |
|----------------|-------------------------------|---------|-----------|
| 5V | C1: 47uF/25V C3: 100uF/35V | 1uF/50V | SMBJ7.0A |
| 7V | | | SMBJ12.0A |
| 12V | | | SMBJ20.0A |
| 24V | | | SMBJ30A |

Remarks:

- C1: Connecting/coupling filter electrolytic capacitors, high frequency and low resistance capacitors are recommended. Capacitance withstand voltage drop more than 75%, remove noise caused by connectors.
- C2: Removing high frequency noise for Ceramic capacitors
- TVS: It is recommended to protect the back-stage circuit when the power supply is abnormal.
- C1, C2, C3, C4: Products that do not require ripple output of power supply can not be used.

>2. EMC Solution--Recommended Circuit

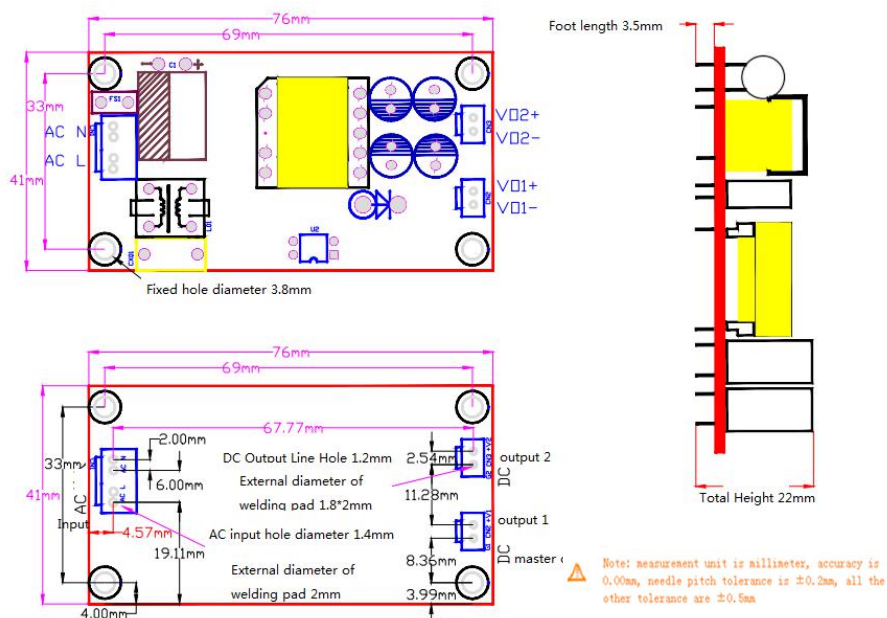


>Input Parts:

| Original Bit Number/Recommended Device | Effects | Recommended values |
|--|---|--------------------|
| CX1:X2 Capacitance | Suppression of differential mode interference | 1MΩ 1/2W |
| R1/R2: Discharge resistance | | 0.22uF/275VAC |
| NF: common mode choke | Common mode interference is suppressed to improve the anti-interference ability of equipment and the reliability of the system. | 10 mH -30 mH |

>Product Packaging and Pin Definition Diagram

Our company reserves the copyright and product ultimate interpretation. The right to change specifications without prior notice. If the picture is inconsistent with the real object, the real object shall prevail.



Product selection and Notes:

1. Please refer to the specifications in detail for selection and use, otherwise the reliability of power supply will not be guaranteed.
2. All parameters of this specification are measured according to the internal standards of our company.
3. It is suggested that the load power of the power supply should not exceed 80% of the rated power of the power supply.
4. With multi-output power supply, each output circuit must be loaded and used at the same time according to the corresponding ratio. The maximum current of high precision voltage (5V) group of this series of products is 1A, and more than 1A will cause permanent damage to the products.
5. Our company can provide customized products.
6. We reserve the right to change specifications without prior notice.
7. For more product information, please contact us or log on our website: <https://www.sanmim.com>

>Contact Information

Guangzhou Sanmim Electronic Technology Co., Ltd.

Tel: 020-37720376 Phone: 13751801082

E-mail: indy@sanmim.com

Address: Building D, No. 8 Microthink Tank Industrial Park, Xianke Road No.1, Xiutang Village, Huadong Town, Huadu District, Guangzhou510890