



AC Power Sockets*AC Plugs

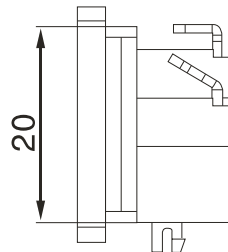
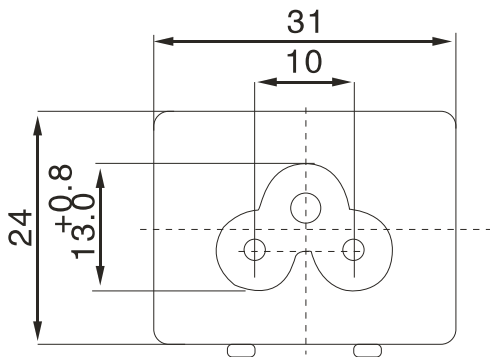
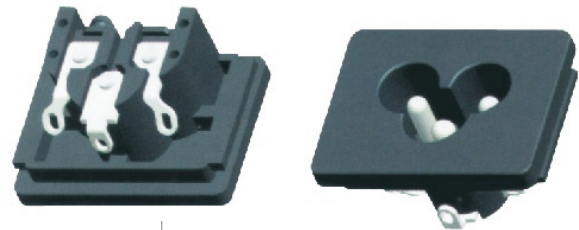
KLS1-AS-111-08 AC Power Sockets*AC Plugs

Material:

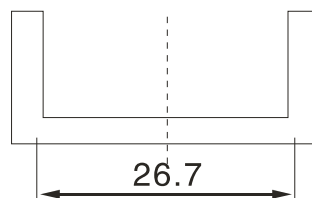
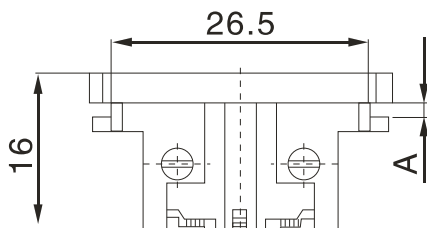
Housing: PA66 PC UL94V-0~V-2
Terminal: Brass

Electrical Characteristics:

Standard: IEC 60320 C6
Ratin: 2.5A 250VAC
Insulator Resistance: 100M Ohm 500V DC / 1 Minute
Dielectric Strength: 2000V AC/1 minute
Operating Temperature: -45°C~+105°C



ITEM	Dimension(mm)
A	0.8
	1.0
	1.5
	2.0



PANEL CUT-OUT

ORDER INFORMATION

Product NO.: KLS1 - AS-111-08-1.5

