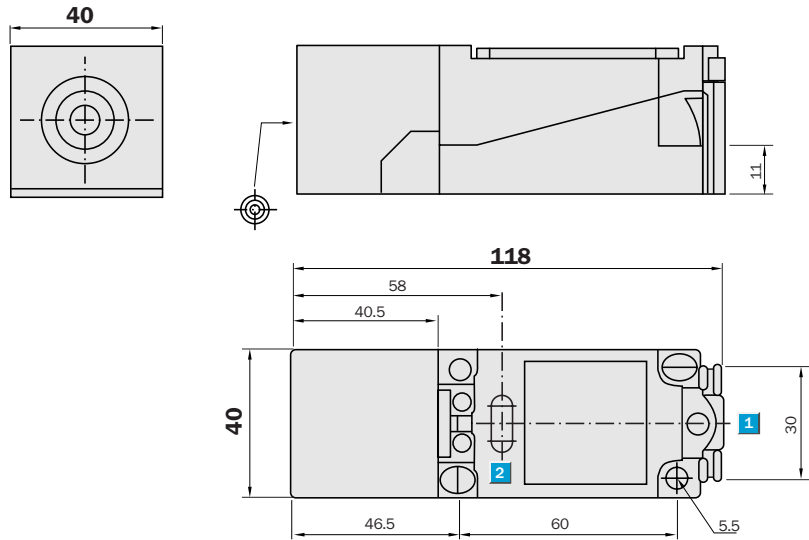
 **Sensing range**
15 mm

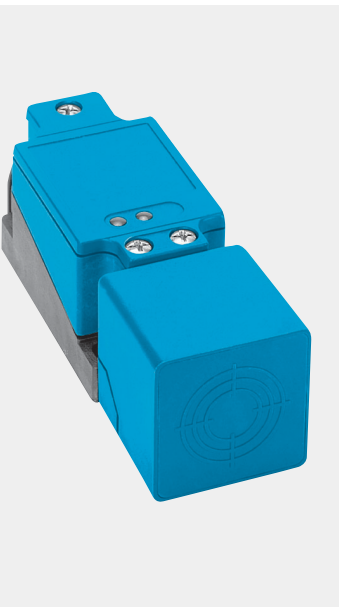
Inductive sensor

- Variable switching zone
- Broad supply voltage range in DC
- Switching output: NO/NC
- Enclosure rating IP 68
- Terminal connection

Dimensional drawing

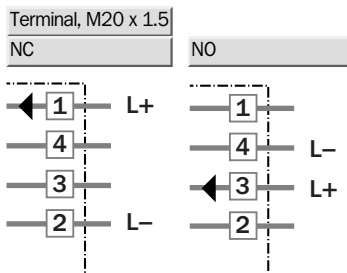
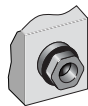


- 1 Connection
- 2 Display LED



Connection type

IQ40-15BDP-KK1



Technical specifications		IQ40-	15BDP-KK1										
Sensing range S_n	15 mm												
Electrical configuration	DC 2-wire												
Supply voltage V_s	DC 5 ... 60 V												
Voltage drop U_d	≤ 5 V ¹⁾												
Continuous current I_a	≤ 200 mA												
Residual current	≤ 1 mA												
Temperature drift, of s_r	± 10 %												
EMC	According to EN 60947-5-2												
Output function	Programmable												
Installation	Flush												
Connection type	Cable gland, Terminal, M20 x 1.5												
Enclosure rating	IP 68 ²⁾												
VDE protection class	<input type="checkbox"/>												
Max. switching frequency	400 Hz												
Dimensions	40 x 40 x 118 mm ³⁾												
Short-circuit protection	<input checked="" type="checkbox"/> ⁴⁾												
Reverse polarity protection	<input checked="" type="checkbox"/>												
Power-up pulse suppression	<input checked="" type="checkbox"/>												
Shock/vibration stress	30 g, 11 ms/10 ... 55 Hz, 1 mm												
Ambient temperature T_a	-25 °C ... +70 °C												
Housing material	Plastic, PBT												

¹⁾ at I_a max and U_b 60 V

²⁾ according to EN 60529

³⁾ Width x height x depth

⁴⁾ (pulsed)

Ordering information	
Type	Order No.
IQ40-15BDP-KK1	6 025 817