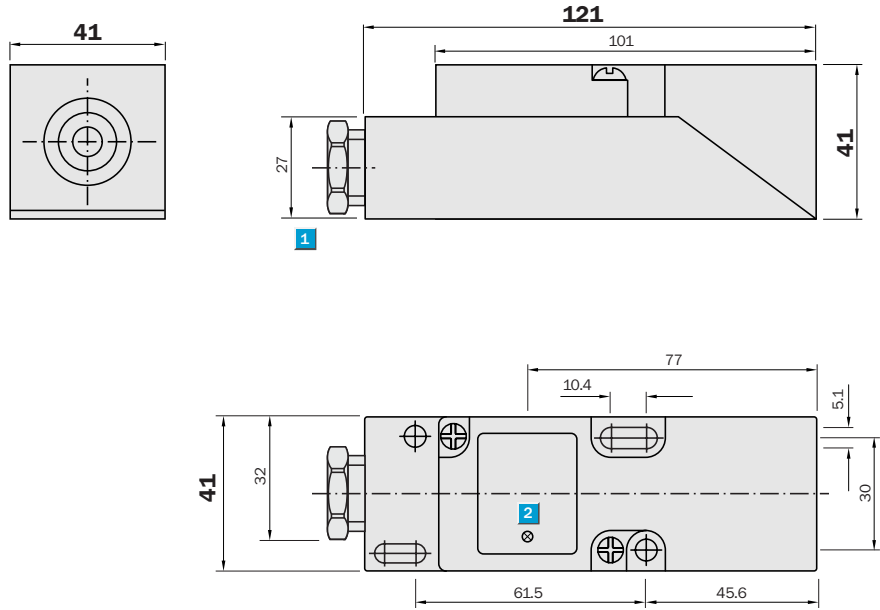
 **Sensing range**
15 / 20 mm

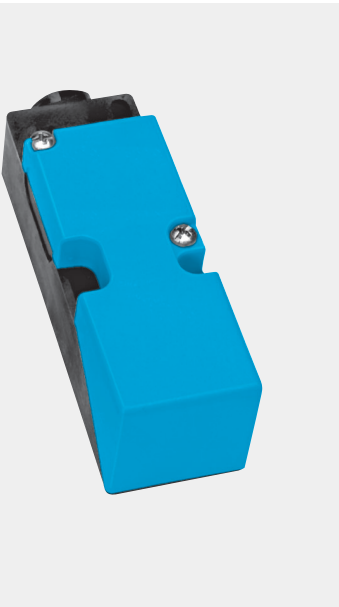
Inductive sensor

- Variable switching zone
- Broad supply voltage range in AC and DC
- Programmable switching output: NO or NC
- Enclosure rating IP 65
- Terminal connection

Dimensional drawing



- 1 Connection
- 2 Display LED

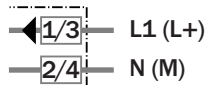


Connection type

- IQ40-15BUP-KKO
- IQ40-20NUP-KKO



Terminal, M20 x 1.5



Technical specifications		IQ40-	15BUP -KKO	20NUP -KKO										
Sensing range S_n	15 mm													
	20 mm													
Electrical configuration	AC/DC 2-wire													
Supply voltage V_s	AC/DC 20 ... 250 V													
Voltage drop U_d AC/DC	≤ 6.5 V / ≤ 6 V													
Continuous current I_a	≤ 350 mA AC (... + 50 °C)													
Continuous current I_a	≤ 250 mA AC (... + 80 °C)													
Continuous current I_a	≤ 100 mA DC													
Intermittent current I_k	2.2 A (20 ms/0.5Hz)													
Min. load current	> 5 mA													
Residual current	≤ 2.5 mA (250 V AC)													
Residual current	≤ 1.3 mA (110 V AC)													
Residual current	≤ 0.8 mA (24 V DC)													
Time delay before availability t_v	≤ 8 ms													
Hysteresis H, of s_r	1 ... 15 %													
Repeatability R	≤ 10 % (U_b and T_a constant) ¹⁾													
Temperature drift, of s_r	± 10 %													
EMC	According to EN 60947-5-2													
Output function	Programmable													
Installation	Flush													
	Non-flush													
Connection type	Cable gland, Terminal, M20 x 1.5													
Enclosure rating	IP 65 ²⁾													
VDE protection class	<input type="checkbox"/>													
Max. switching frequency AC/DC	20 Hz / 55 Hz													
Dimensions	40 x 40 x 121 mm ³⁾													
Power-up pulse suppression	✓													
Shock/vibration stress	30 g, 11 ms/10 ... 55 Hz, 1 mm													
Ambient temperature T_a	-25 °C ... +80 °C													
Housing material	Plastic													

¹⁾ of s_r

²⁾ according to EN 60529

³⁾ Width x height x depth

Ordering information

Type	Order No.
IQ40-15BUP-KKO	7 902 136
IQ40-20NUP-KKO	7 902 137