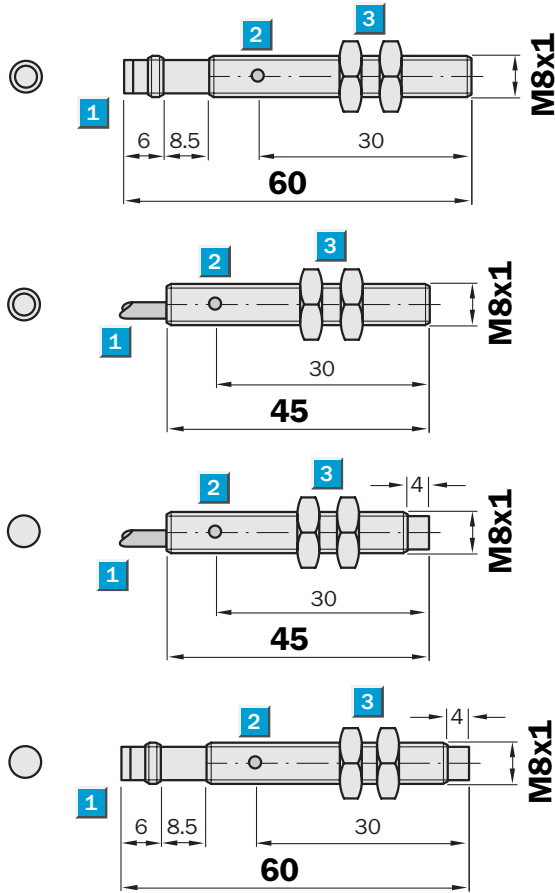


Sensing range
3 / 6 mm

Inductive sensor

- Triple sensing range
- Installation quasi flush or non-flush in metal
- Short-circuit protection (pulsed)
- Robust brass housing, chrome-plated with fine thread M8 x 1 mm
- Enclosure rating IP 67

Dimensional drawing



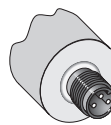
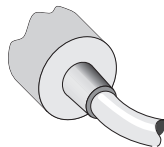
- 1 Connection
- 2 Display LED
- 3 Fastening nuts (2 x); width across 13, metal



Connection type

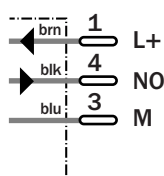
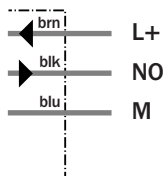
IM08-03BPS-ZW1
IM08-06NNS-ZW1
IM08-06NPS-ZW1

IM08-03BPS-ZT1
IM08-06NPS-ZT1



3 x 0.14 mm²

M8, 3-pin



See chapter Accessories

Connector, M8, 3-pin

Technical specifications		IM08-	03BPS-ZW1	03BPS-ZT1	06NNS-ZW1	06NPS-ZW1	06NPS-ZT1						
Sensing range S_n	3 mm												
	6 mm												
Electrical configuration	DC 3-wire												
Supply voltage V_s	DC 10 ... 30 V												
Ripple U _{pp}	≤ 20 % ¹⁾												
Voltage drop U _d	≤ 2 V ²⁾												
Power consumption	≤ 10 mA ³⁾												
Continuous current I_a	≤ 200 mA												
Time delay before availability t _v	≤ 100 ms												
Hysteresis H, of s _r	1 ... 15 %												
Repeatability R	≤ 5 % (U _b and T _a constant) ⁴⁾												
Temperature drift, of s _r	± 10 %												
EMC	According to EN 60947-5-2												
Switching output	PNP												
	NPN												
Output function	Normally open ⁵⁾												
Installation	Quasi-flush ⁶⁾												
	Non-flush												
Connection type	Cable, PVC, 2 m												
	Connector, M8, 3-pin												
Enclosure rating	IP 67 ⁷⁾												
Max. switching frequency	1,000 Hz												
	500 Hz												
Dimensions	M8 x 1 ⁸⁾												
Short-circuit protection	✓ ⁹⁾												
Reverse polarity protection	✓												
Power-up pulse suppression	✓												
Shock/vibration stress	30 g, 11 ms/10 ... 55 Hz, 1 mm												
Ambient temperature T _a	-25 °C ... +70 °C												
Housing material	Brass, chrome-plated, plastic												
Tightening torque	4 Nm												

¹⁾ of U_b
²⁾ at I_a max
³⁾ without load

⁴⁾ of s_r
⁵⁾ other output functions available on request.

⁶⁾ when mounting in conductible materials the sensors must be installed with a distance A to the surface. A Steel, metal =

1 mm/A Stainless steel = 0 mm
⁷⁾ according to EN 60529
⁸⁾ Thread diameter x pitch (mm)
⁹⁾ (pulsed)

Order information	
Type	Order no.
IM08-03BPS-ZW1	6 027 505
IM08-03BPS-ZT1	6 025 574
IM08-06NNS-ZW1	6 027 507
IM08-06NPS-ZW1	6 027 506
IM08-06NPS-ZT1	6 027 508