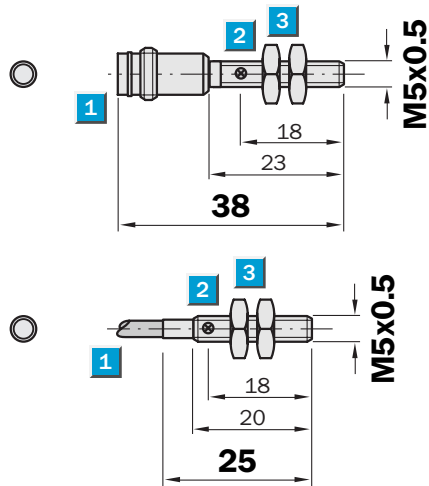


Sensing range
0.8 mm

Inductive sensor

- Can be installed flush
- High switching frequency
- Short-circuit protection (pulsed)
- Robust stainless steel housing with fine thread M5 x 0.5 mm
- Enclosure rating IP 67

Dimensional drawing

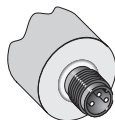


- 1 Connection
- 2 Display LED
- 3 Fastening nuts (2 x); width across 7, stainless steel

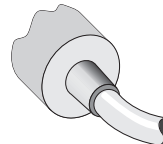
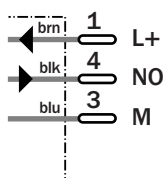


Connection type

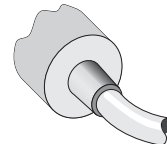
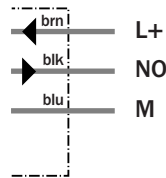
IM05-0B8NS-ZT1	IM05-0B8NS-ZW1	IM05-0B8NO-ZW1
IM05-0B8PS-ZT1	IM05-0B8PS-ZWB	
	IM05-0B8PS-ZW1	



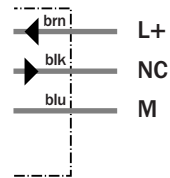
M8, 3-pin



3 x 0.14 mm²



3 x 0.14 mm²



See chapter Accessories

Connector, M8, 3-pin

Technical specifications		IM05-	OB8NO-ZW1	OB8NS-ZT1	OB8NS-ZW1	OB8PS-ZT1	OB8PS-ZWB	OB8PS-ZW1				
Sensing range S_n	0.8 mm											
Electrical configuration	DC 3-wire											
Supply voltage V_s	DC 10 ... 30 V											
Ripple U_{pp}	$\leq 20\%$ ¹⁾											
Voltage drop U_d	$\leq 2\text{ V}$ ²⁾											
Power consumption	$\leq 10\text{ mA}$ ³⁾											
Continuous current I_a	$\leq 200\text{ mA}$											
Time delay before availability t_v	$\leq 10\text{ ms}$											
Hysteresis H, of s_r	10 %											
Repeatability R	$\leq 1.5\%$ (U_b and T_a constant)											
Temperature drift, of s_r	$\pm 10\%$											
EMC	According to EN 60947-5-2											
Switching output	NPN											
	PNP											
Output function	Normally closed											
	Normally open											
Installation	Flush											
Connection type	Cable, PVC, 2 m											
	Connector, M8, 3-pin											
	Cable, PVC, 5 m											
Enclosure rating	IP 67 ⁴⁾											
Max. switching frequency	5,000 Hz											
Dimensions	M5 x 0.5 ⁵⁾											
Short-circuit protection	✓ ⁶⁾											
Reverse polarity protection	✓											
Power-up pulse suppression	✓											
Shock/vibration stress	30 g, 11 ms/10 ... 55 Hz, 1 mm											
Ambient temperature T_a	-25 °C ... +70 °C											
Housing material	Stainless steel, plastic											
Tightening torque	1.5 Nm											

¹⁾ of U_b
²⁾ at $I_a = 200\text{ mA}$

³⁾ without load
⁴⁾ according to EN 60529

⁵⁾ Thread diameter x pitch (mm)
⁶⁾ (pulsed)

Order information	
Type	Order no.
IM05-OB8NO-ZW1	6 020 157
IM05-OB8NS-ZT1	6 020 158
IM05-OB8NS-ZW1	6 020 155
IM05-OB8PS-ZT1	6 020 110
IM05-OB8PS-ZWB	6 021 575
IM05-OB8PS-ZW1	6 011 591