

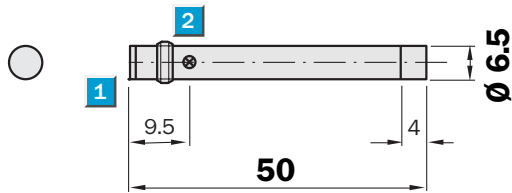
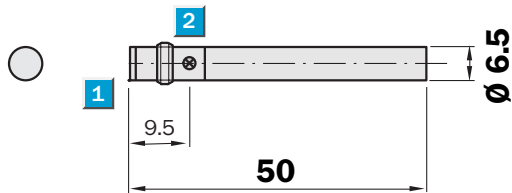
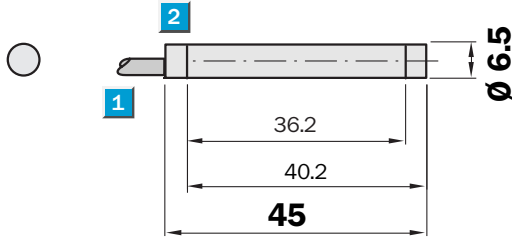
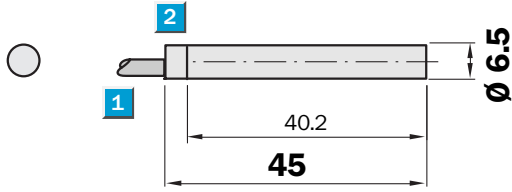
Sensing range
2 / 4 mm

Inductive sensor

- Enhanced sensing range
- High switching frequency
- Short-circuit protection (pulsed)
- Solid stainless steel housing
- Enclosure rating IP 67



Dimensional drawing

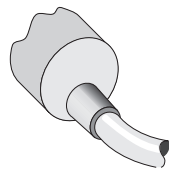


- 1 Connection
- 2 Display LED

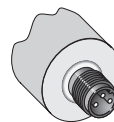
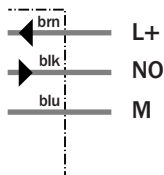


Connection type

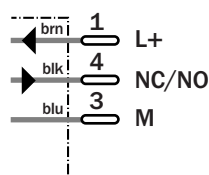
IH06-02BNS-VW1	IH06-02BNS-VT1
IH06-02BPS-VW1	IH06-02BPO-VT1
IH06-04NNS-VW1	IH06-02BPS-VT1
IH06-04NPS-VW1	IH06-04NPS-VT1



3 x 0.14 mm²



M8, 3-pin



See chapter Accessories
Connector, M8, 3-pin
Mounting systems

Technical data		IH06-	02BNS-VW1	02BPS-VW1	02BNS-VT1	02BPO-VT1	02BPS-VT1	04NNS-VW1	04NPS-VW1	04NPS-VT1		
Sensing range S_n	4 mm											
	2 mm											
Electrical configuration	DC 3-wire											
Supply voltage V_s	DC 10 ... 30 V											
Residual ripple V_{pp}	$\leq 10\%$ ¹⁾											
Voltage drop V_d	$\leq 1.2\text{ V}$ ²⁾											
Power consumption	$\leq 20\text{ mA}$ ³⁾											
Continuous current I_a	$\leq 200\text{ mA}$											
Time delay before availability t_v	$\leq 100\text{ ms}$											
Hysteresis H, of s_r	2 ... 15 %											
Repeatability R	$\leq 5\%$ (U_b and T_a constant) ⁴⁾											
Temperature drift, of s_r	$\pm 10\%$											
EMC	According to EN 60947-5-2											
Switching output	PNP											
	NPN											
Output function	Normally open											
	Normally closed											
Installation	Non-flush											
	Flush ⁵⁾											
Connection type	Connector, M8, 3-pin											
	Cable, PVC, 2 m											
Enclosure rating	IP 67 ⁶⁾											
Max. switching frequency	1,800 Hz											
	3,000 Hz											
Sleeve diameter	6.5 mm											
Short circuit protection	✓ ⁷⁾											
Reverse polarity protection	✓											
Power-up pulse suppression	✓											
Shock/vibration stress	30 g, 11 ms/10 ... 55 Hz, 1 mm											
Ambient operating temperature T_a	-25 °C ... +70 °C											
Housing material	Stainless steel, plastic											

¹⁾ of U_b
²⁾ at I_a max

³⁾ without load
⁴⁾ of s_r

⁵⁾ see installation notes
⁶⁾ according to EN 60529

⁷⁾ (pulsed)

Order information

Type	Order no.
IH06-02BNS-VW1	7 900 178
IH06-02BPS-VW1	7 900 177
IH06-02BNS-VT1	7 900 180
IH06-02BPO-VT1	1 016 857
IH06-02BPS-VT1	7 900 179
IH06-04NNS-VW1	7 900 182
IH06-04NPS-VW1	7 900 181
IH06-04NPS-VT1	7 900 183